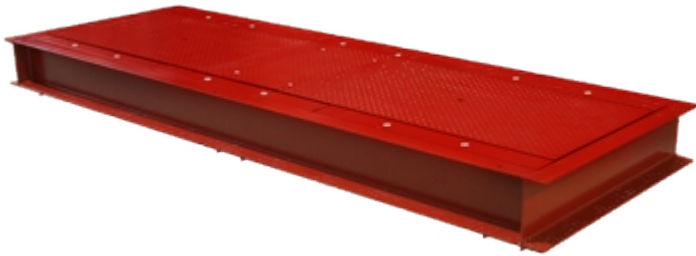


## RWSCP DYNAMIC

Flush-floor platform for axle weighing stations.



Reinforced platform which allows to calculate the weight of a vehicle in transit, adding up the various axles, weighed when stationary or in motion. Designed for flush floor installation.

OIML R134 certified for in-motion weighing of the whole vehicle

**The best solution  
for advanced industrial  
applications**

## Technical features

- Loading surface made of lobed sheet metal, sized to support any load according to the parameters dictated by the [Directive 96/53/EC](#) (maximum load on single axle for vehicles in transit in Europe).
  - Frame for containing the RWSCP platform, consisting of a single load-bearing structure, in welded painted steel, which does not require assembly. Facilitates scale installation operations and simplifies masonry work.
  - Sandblasting process and painting with bi-component epoxy primer, with very high resistance to corrosion.
  - Dimensions of the loading surface (lxw): 3 x 0.73 m.
  - 6 compression load cells, class C3, in IP68 stainless steel.
  - 20m cable for connection to weight indicator.
  - Dust and water proof wiring and connections, easy to connect and disconnect.
  - Hermetic junction box.
  - Central hatch for inspection and routine maintenance.
  - Wide range of connectable weight indicators, also with rechargeable battery functioning, which allow the use of the scale also without power supply.
  - Maximum transit speed: 5km/h.
  - Accuracy 1% for internal use, 2% for legal-for-trade use.
- These accuracies are obtainable by following the mounting specifications and the instructions provided in the installation manual.

## Great versatility of use

- The axle weighing system is ideal to:
  - Weigh any type of vehicle regardless of the number of axles.
  - Check the weight of the material transported by the vehicle and carry out simple checks on incoming/outgoing goods.
  - Check the weight of each axle or of all the various sums of weights.
  - Check the presence of any vehicle overloads, avoiding incurring penalties.

## Certifications and approvals

- The system is CE approved according to Directive 2014/31/EU (NAWI, static weighing) for verification of the axle weight.
- The system is also OIML R134 certified for in-motion weighing (dynamic) of the whole vehicle, at a maximum speed of 5km / h with a weighing accuracy of 2% (sum of the weight of the axles, depending on the rules in force in the country of use).
- The system is approved in Italy as a weighing instrument with automatic operation, for in-motion road vehicle weighing according to Decree no.267995 of 19/9/2019.
- The system is also approved for dynamic weighing in various European countries (for further information please contact our sales office).

## Stationary and in-motion weighing

- The stationary weighing function allows the vehicle to be weighed by adding up the weights of the individual axles. As well as being the most cost-effective way to weigh, it avoids penalties due to axle overloading.
- The in-motion weighing function allows you to minimize weighing time.  
The weight is acquired as the vehicle passes over the scale, without the need to stop for weighing each axle.  
In-motion weighing is particularly suitable for those who need to weigh frequently during the day.

## Technologically advanced weight indicator

- The touch screen weight indicator simplifies the use of the scale and allows the introduction of personal data. With integrated printer or USB communication port to save the weighs.
- Programmable digital inputs and outputs are also available, to realize automations or to pilot bars, traffic lights etc.

## Available functions

- Weighing of the axle of a vehicle.
- Calculation of the total weight of the vehicle.
- Weighing with insertion of the preset tare weight.
- Calculation of the weight difference between two weighs.
- Database of 500 vehicles.
- Customizable texts.
- Printing and saving of the weighs on USB memory.

*RAL3009 400ml spray paint provided as standard, for post-installation finishing.* The weighing system is equipped with a USB memory.

## DETAIL 1



RWSCP: installation example, with a well leveled concrete surface.

VERSIONS

Available versions				
Codice	l x w x h (mm)	N° celle	Max (kg)	d (kg)
<u>RWSCP20T-1</u>	3000x730	6 x 5000kg	20000	5
<u>RWSCP40T-1</u>	3000x730	6 x 10000kg	40000	10
<u>RWSCP50T-1</u>	3000x730	6 x 12500kg	50000	20

WARNING: the symbol "\*" next to the price indicates that the product requires special transport, with quote.



[www.diniargeo.com](http://www.diniargeo.com)

“YOUR WORLDWIDE PARTNER FOR WEIGHING,”

DINI ARGEO  
FRANCE sarl  
France

DINI ARGEO  
GMBH  
Germany

DINI ARGEO  
UK Ltd  
United Kingdom

DINI ARGEO WEIGHING  
INSTRUMENTS Ltd  
China

DINI ARGEO  
OCEANIA  
Australia



#### COMPANY HEADQUARTERS

Via Della Fisica, 20  
41042 Spezzano di Fiorano Modena • Italy  
Tel. +39.0536 843418

#### SERVICE ASSISTANCE

Via Dell'Elettronica, 15  
41042 Spezzano di Fiorano Modena • Italy  
Tel. +39.0536 921784

SALES AND TECHNICAL ASSISTANCE SERVICE