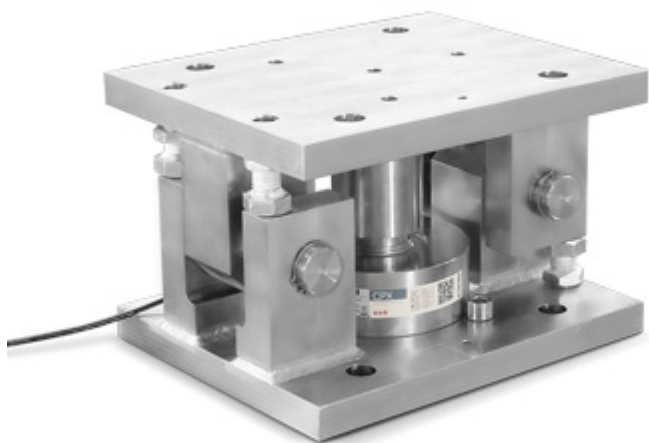


KCP100H\_OLD20220208

"KCP100H" mounting kit in zinc-plated steel,  
for CPX compression load cells



Mounting kits for CPX series compression load cells from 50,000 kg to 100,000 kg. Suitable for weighing silos, hoppers and large capacity tanks. UNI EN 1090 certificate upon request.

## MAIN FEATURES

- Construction in zinc-plated steel
- Double anti-tipping system
- Overload protection nuts
- Locking nuts to maintain the raised position, simplify the installation and/or removal of the load cell

UNI EN 1090 certificate upon request



**DINI ARGEO**  
FRANCE sarl  
France

**DINI ARGEO**  
GMBH  
Germany

**DINI ARGEO**  
UK Ltd  
United Kingdom

**DINI ARGEO WEIGHING**  
INSTRUMENTS Ltd  
China

**DINI ARGEO**  
OCEANIA  
Australia



#### COMPANY HEADQUARTERS

Via Della Fisica, 20  
41042 Spezzano di Fiorano Modena • Italy  
Tel. +39.0536 843418

#### SERVICE ASSISTANCE

Via Dell'Elettronica, 15  
41042 Spezzano di Fiorano Modena • Italy  
Tel. +39.0536 921784

SALES AND TECHNICAL ASSISTANCE SERVICE