

XSPEED

XSPEED TOOL: free diagnostic and weighing filter configuration software



PC software that allows you to record the signal coming from the load cell in real time and process it by applying specific filters to remove vibrations, disturbance and noise. Indispensable to obtain precise and fast weighs in automated weighing systems.

The best solution
for advanced industrial
applications

FEATURES

- Time and frequency domain signal analysis.
- Data reception at very high speed (up to 2600 readings per second).
- Automatic data acquisition based on time or weight thresholds.
- Real time signal processing.
- Application of filters of your choice, fully configurable, to remove vibrations, oscillations, peaks etc., making the weight stable and the scale reactive and performing.
- Calibration of the instrument, which includes:
 - Calibration using sample weights, with the possibility to linearize the system up to 8 points.
 - Theoretical calibration, with the insertion of the data of the system to be realized (load cells, dead load etc..).
- Archive of weighs and configured filters.

FILTERS

- Coarse filter for the removal of signal background noise and weight stabilization.
- Fine filter to increase the reading accuracy.
- Selective filter to isolate and eliminate noise with precise frequencies.

MINIMUM REQUIREMENTS

- Operating System: Windows 10
- Processor: 1.6 Ghz
- Ram: 4 Gb
- Free hard disk space: 250 Mb

SUPPORTED PRODUCTS

- DGT4X Series

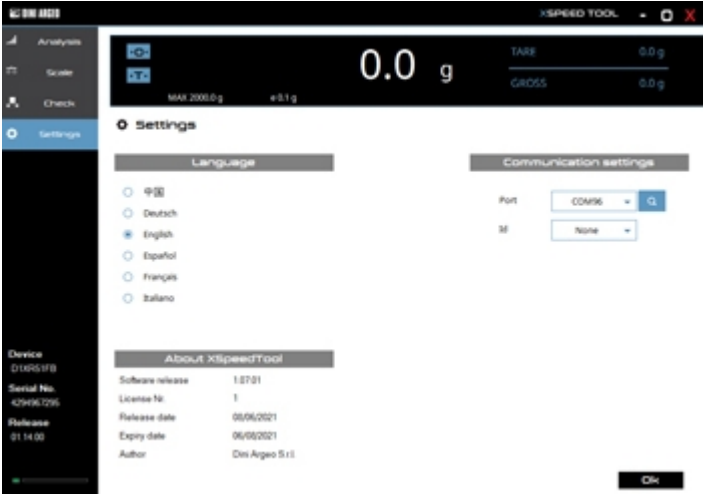
XSPEED TOOL

- Free download from the Download section.

DETAIL 1



DETAIL 2





DINI ARGEO
FRANCE sarl
France

DINI ARGEO
GMBH
Germany

DINI ARGEO
UK Ltd
United Kingdom

DINI ARGEO WEIGHING
INSTRUMENTS Ltd
China

DINI ARGEO
OCEANIA
Australia



COMPANY HEADQUARTERS

Via Della Fisica, 20
41042 Spezzano di Fiorano Modena • Italy
Tel. +39.0536 843418

SERVICE ASSISTANCE

Via Dell'Elettronica, 15
41042 Spezzano di Fiorano Modena • Italy
Tel. +39.0536 921784

SALES AND TECHNICAL ASSISTANCE SERVICE