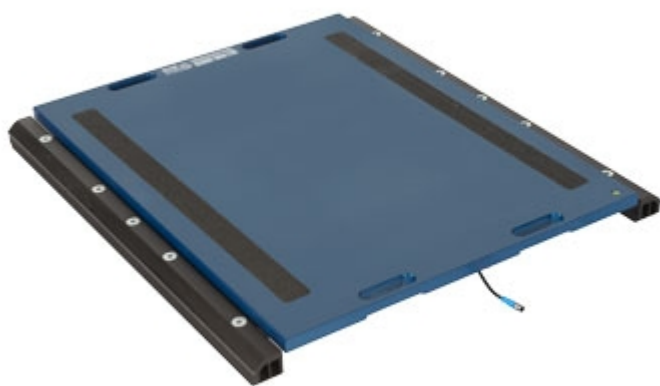


WWSF_OLD20200110

"WWSF" series 900 x 700 mm WHEEL WEIGHING
PADS



Pads designed for creating weighing stations for large sized vehicles fitted with twinned wheels (articulated lorries, tractor-trailers, building yard vehicles, etc.); fitted with handles on both sides for easing the transport and the positioning. Particularly suitable for dynamic weighing.

**The best solution
for advanced industrial
applications**

FEATURES

- Pad dimensions: 900x811mm. Height 75mm. Weight approximately 67kg.
- Loading surface: 900x700mm.
- Fitted with double handles on both sides for easing the transport.
- Sturdy structure, made in special aluminium, which guarantees lightness and makes these suitable also for harsh working conditions.
- Cable with quick connector, pad side.
- 10 m cable for connecting pad to indicator, complete of connectors.
- IP68 stainless steel load cells.
- Hermetic junction box with IP68 protection degree.
- Special vulcanised nonslip rubber applied under the pad for good grip on all surfaces.
- Extremely simple and reliable connection of the scale to the weight indicator.
- The WWS pads are patented; the number is 1.342.302.
- Available in legal for trade approved version.
- Available in high resolution version.
- Available upon price estimate in Atex version for 1&21 e 2&22 zones.

NOTES ON THE CE-M APPROVED VERSIONS

- The pads are for legal for trade use:
 - In the single-pad systems, not used to weigh vehicles.
 - In the wheel weighing systems in which the number of pads is equal to the number of vehicle wheels.
 - In the axle weighing systems composed of one or more multiples of WWS pads, except possible limitations of use for some European States.
- The axle weighing systems with 2 WWS pads and a 3590E "AF09" weight indicator are OIML R134 certified for the dynamic vehicle weighing, according to the legal standards in force in the Country of use.
- The CE-M legal for trade divisions indicated in the "version" table are available with ECEM option. ECEM option is needed for each legal for trade pad of the system.
- Legal for trade systems with more than one WWS, are fitted with the approval of the weight sum and related division:
Example for a 4 pads system
Single CE-M Pad: Max=1500kg and e=0,5kg
CE-M SUM: Max=6000kg and e=2kg

AXLE WEIGHING SYSTEM INSTALLATION:



VERSIONS

Available versions

Codice	l x w x h (mm)	Max (kg)	d (kg)	M (kg)	d HR (kg)*
<u>WWSF10T-1</u>	900x700x75	10000	5	5	0,5
<u>WWSF15T-1</u>	900x700x75	15000	5	5	0,5
<u>WWSF20T-1</u>	900x700x75	20000	10	10	1
<u>WWSF25T-1</u>	900x700x75	25000	10	--	1

(*) These divisions are obtainable only with the relative options.



www.diniargeo.com

“YOUR WORLDWIDE PARTNER FOR WEIGHING,”

DINI ARGEO
FRANCE sarl
France

DINI ARGEO
GMBH
Germany

DINI ARGEO
UK Ltd
United Kingdom

DINI ARGEO WEIGHING
INSTRUMENTS Ltd
China

DINI ARGEO
OCEANIA
Australia



COMPANY HEADQUARTERS

Via Della Fisica, 20
41042 Spezzano di Fiorano Modena • Italy
Tel. +39.0536 843418

SERVICE ASSISTANCE

Via Dell'Elettronica, 15
41042 Spezzano di Fiorano Modena • Italy
Tel. +39.0536 921784

SALES AND TECHNICAL ASSISTANCE SERVICE