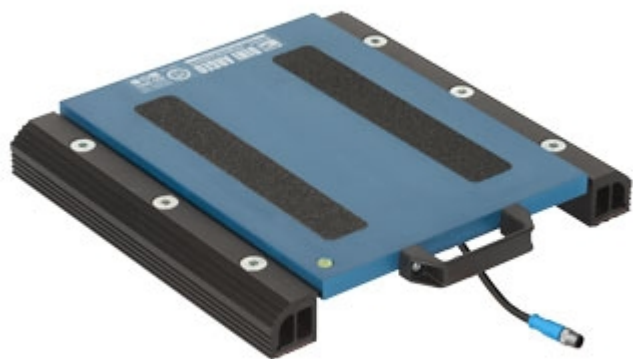


WWSB_OLD20200110

"WWSB" WHEEL WEIGHING PADS



Pads designed to create weighing stations for small sized vehicles (automobiles, carts, vans, etc.); particularly accurate and sturdy, with attention to details.

**The best solution
for advanced industrial
applications**

FEATURES

- Pad dimensions: 400x410mm. Height 58mm. Weight approximately 14,5kg.
- Loading surface: 400x300mm.
- Very handy.
- Sturdy structure, made with special aluminium, which guarantees lightness and makes these suitable also for harsh working conditions.
- Cable with quick connector, pad side.
- 10m cable for connecting the pad to the indicator, complete of connector.
- IP67 nickel-plated steel loading cells.
- IP68 stainless steel load cells, in the WWSB versions with 6t and 8t capacity.
- Hermetic junction box with IP68 protection degree.
- Special vulcanised nonslip rubber applied under the pad, for good grip on all types of surfaces.
- Extremely simple and reliable connection of the scale to the weight indicator.
- The WWS pads are patented; the number is 1.342.302.
- Available in legal for trade approved version.
- Available in high resolution version.
- Available upon price estimate in Atex version for 1&21 e 2&22 zones.

NOTES ABOUT THE LEGAL FOR TRADE APPROVED VERSIONS


- The pads are for legal for trade use:
 - In the single-pad systems, not used to weigh vehicles.
 - In the wheel weighing systems in which the number of pads is equal to the number of vehicle wheels.
 - In the axle weighing systems composed of one or more multiples of WWS pads, except possible limitations of use for some European States.
- The CE-M legal for trade divisions indicated in the "version" table are available with ECEM option. ECEM option is needed for each legal for trade pad of the system.
- Legal for trade systems with more than one WWS, are fitted with the approval of the weight sum and related division:
Exemple for a 4 pads system
Single CE-M Pad: Max=1500kg and e=0,5kg
CE-M SUM: Max=6000kg and e=2kg

AXLE WEIGHING SYSTEM INSTALLATION:



VERSIONS

Available versions

Codice	l x w x h (mm)	Max (kg)	d (kg)	 (kg)	d HR (kg)*
<u>WWSB600-1</u>	400x300x58	600	0,2	0,2	--
<u>WWSB1500-1</u>	400x300x58	1500	0,5	0,5	--
<u>WWSB3T-1</u>	400x300x58	3000	1	1	0,1
<u>WWSB6T-1</u>	400x300x58	6000	2	2	0,2
<u>WWSB8T-1</u>	400x300x58	8000	5	5	0,5

(*) These divisions are obtainable only with the relative options



www.diniargeo.com

“YOUR WORLDWIDE PARTNER FOR WEIGHING,”

DINI ARGEO
FRANCE sarl
France

DINI ARGEO
GMBH
Germany

DINI ARGEO
UK Ltd
United Kingdom

DINI ARGEO WEIGHING
INSTRUMENTS Ltd
China

DINI ARGEO
OCEANIA
Australia



COMPANY HEADQUARTERS

Via Della Fisica, 20
41042 Spezzano di Fiorano Modena • Italy
Tel. +39.0536 843418

SERVICE ASSISTANCE

Via Dell'Elettronica, 15
41042 Spezzano di Fiorano Modena • Italy
Tel. +39.0536 921784

SALES AND TECHNICAL ASSISTANCE SERVICE