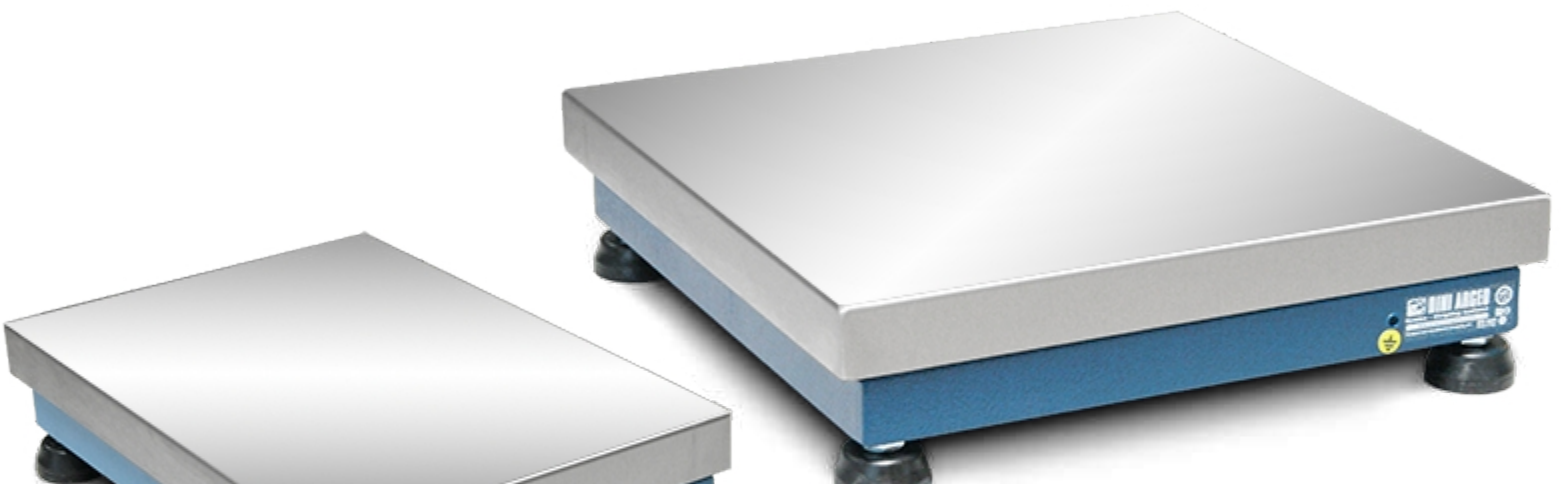




T\_OLD20181207

"T" SERIES - SINGLE CELL PLATFORMS



The best solution  
for advanced industrial  
applications

## MAIN FEATURES

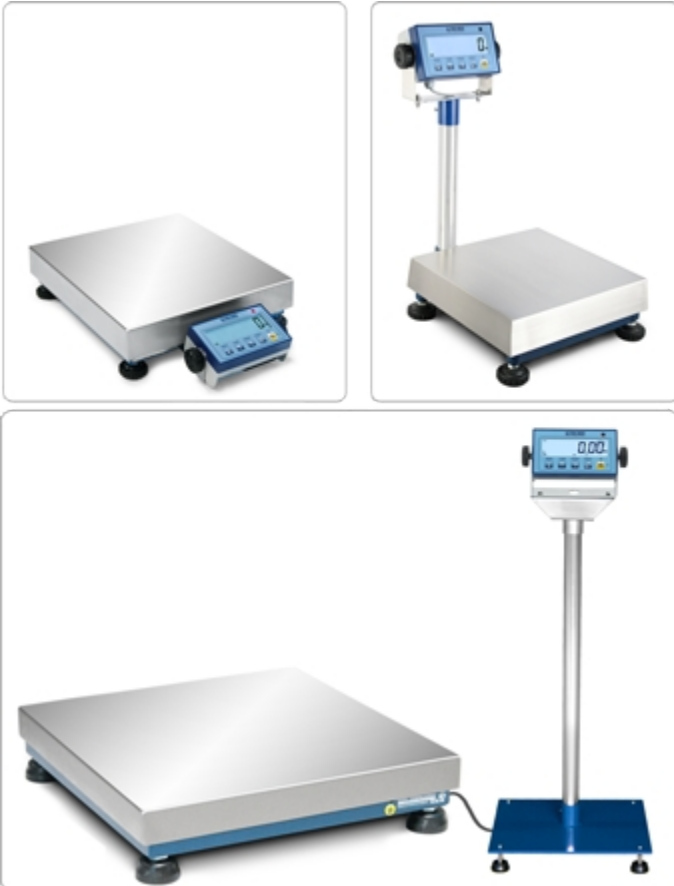
- Functions with an approved aluminium “single point” load cell according to OIML R60 standards with protection against dust and water splashes according to IP65 standards (350 Ohm input resistance).
- Steel tubular structure, oven-fire painted blue, with adjustable resting feet and level.
- Fitted with satined AISI 304 stainless steel loading surface.
- Up to 15 Vdc power supply.
- Shielded 3m connection cable with connectors for connection to the indicator.

## OPTIONS FOR ATEX VERSION

- CCATEX: ATEX certificate for each load cell
- DCATEX2GD: Declaration of ATEX conformity of whole PLATFORM + ATEX 2GD DINI ARGEO INDICATOR
- DCATEX3GD: Declaration of ATEX conformity of whole PLATFORM + ATEX 3GD DINI ARGEO INDICATOR

## SUPPORT BRACKETS AND COLUMNS

- Example of use with bracket, attached column or floor column.



## AVAILABLE UPON PRICE ESTIMATE

- Belt and roller units to be applied on the loading surface
- Special sizes and capacities

## VERSIONS

### Available versions

Codice	l x w x h (mm)	Max (kg)	d (g)	<b>M</b> (g)*	<b>M</b> 2R (g)*	d HR (g)*
<u>IS3</u>	230x330x93	3	0,5	1	--	0,1
<u>IS6</u>	230x330x93	6	1	2	1-2	0,2
<u>IS15</u>	230x330x93	15	2	5	2-5	0,5
<u>IT6</u>	330x330x93	6	1	2	1-2	0,2
<u>IT15</u>	330x330x93	15	2	5	2-5	0,5
<u>IT30</u>	330x330x93	30	5	10	5-10	1
<u>IQ15</u>	400x400x115	15	2	5	2- 5	0,5
<u>IQ30</u>	400x400x115	30	5	10	5-10	1
<u>IQ60</u>	400x400x115	60	10	20	10-20	2
<u>IQ150</u>	400x400x115	150	20	50	20-50	5
<u>IM30</u>	400x500x120	30	5	10	5-10	1
<u>IM60</u>	400x500x120	60	10	20	10-20	2
<u>IM150</u>	400x500x120	150	20	50	20-50	5
<u>IC30</u>	500x500x110	30	5	10	5-10	1
<u>IC60</u>	500x500x110	60	10	20	10-20	2
<u>IC150</u>	500x500x110	150	20	50	20-50	5
<u>IL60</u>	500x600x132	60	10	20	10-20	2
<u>IL150</u>	500x600x132	150	20	50	20-50	5
<u>IL300</u>	500x600x132	300	50	100	50-100	10
<u>IX60</u>	600x600x137	60	10	20	10-20	2
<u>IX150</u>	600x600x137	150	20	50	20-50	5
<u>IX300</u>	600x600x137	300	50	100	50-100	10
<u>IG150</u>	700x700x145	150	20	50	--	5
<u>IG300</u>	700x700x145	300	50	100	50-100	10
<u>IG600</u>	700x700x145	600	100	200	100-200	20

(\*) Divisions obtainable only with the relative options, in combination with Dini Argeo weight indicator.



**DINI ARGEO**  
FRANCE sarl  
France

**DINI ARGEO**  
GMBH  
Germany

**DINI ARGEO**  
UK Ltd  
United Kingdom

**DINI ARGEO WEIGHING**  
INSTRUMENTS Ltd  
China

**DINI ARGEO**  
OCEANIA  
Australia



#### COMPANY HEADQUARTERS

Via Della Fisica, 20  
41042 Spezzano di Fiorano Modena • Italy  
Tel. +39.0536 843418

#### SERVICE ASSISTANCE

Via Dell'Elettronica, 15  
41042 Spezzano di Fiorano Modena • Italy  
Tel. +39.0536 921784

SALES AND TECHNICAL ASSISTANCE SERVICE