

RCD_OLD20171129

"RCD" SERIES COLUMN LOAD CELLS



Digital version of compression load cells, 4000 divisions, ideal for CE-M approved weighbridges, tanks, silos, etc. Manufactured in STAINLESS STEEL, with IP68 protection, fitted with "anti rat" armoured cable.

CAPACITIES (kg): 30000.

OIML R60. C4 precision class.

Stainless steel. IP68 protection.

The best solution
for advanced industrial
applications

MAIN FEATURES

- C4 PRECISION CLASS.
- MANUFACTURED IN STAINLESS STEEL.
- IP68 PROTECTION.
- 30.000/40000 kg CAPACITY
- SOURCE ARRESTERS' EQUIPPED
- "ANTI RAT" 15 m ARMOURED CABLE.
- TEST CERTIFICATE AVAILABLE UPON REQUEST.

TECHNICAL FEATURES

- 200.000d full load capacity resolution
- Combined error of Full Scale Output: $\pm 0,017\%$
- Operating temperature range: $-20^{\circ}\text{C}/+60^{\circ}\text{C}$
- Power supply voltage from 7,5 to 16 VDC
- Conversion: 24 bit
- RS485 connection.
- Safe overload: 150% F.S.
- 6-pole armoured cable.

WIRING CODE

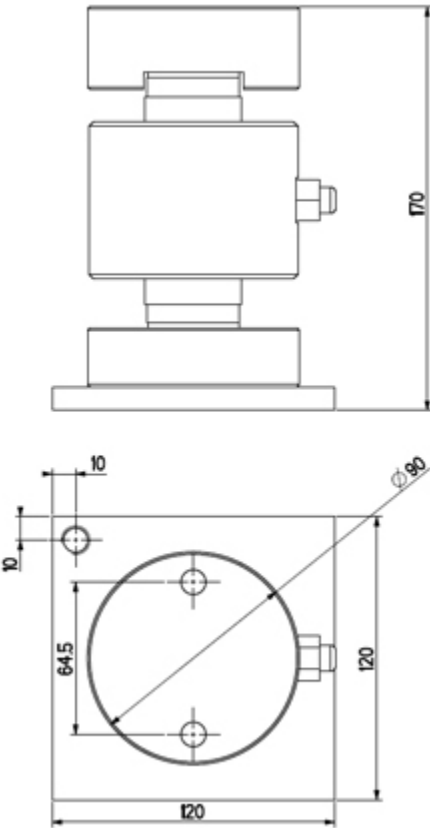
- Wiring code of the standard cable colours.

RCD cell connections	
<u>Colour</u>	<u>Function</u>
Input	
WHITE	INPUT +
BROWN	INPUT -
Input signal	
GREY	A+
PINK	B-
Output signal	
GREEN	A+
YELLOW	B-

EXTRAS AVAILABLE


- Assembly kit.

DETAIL 1



Technical drawing in mm, with KRCA kit.

VERSIONS

Available versions	
Codice	Max (kg)
<u>RCD30C4</u> 	30000
<u>RCD40C4</u> 	40000



www.diniargeo.com

“YOUR WORLDWIDE PARTNER FOR WEIGHING,”

DINI ARGEO
FRANCE sarl
France

DINI ARGEO
GMBH
Germany

DINI ARGEO
UK Ltd
United Kingdom

DINI ARGEO WEIGHING
INSTRUMENTS Ltd
China

DINI ARGEO
OCEANIA
Australia



COMPANY HEADQUARTERS

Via Della Fisica, 20
41042 Spezzano di Fiorano Modena • Italy
Tel. +39.0536 843418

SERVICE ASSISTANCE

Via Dell'Elettronica, 15
41042 Spezzano di Fiorano Modena • Italy
Tel. +39.0536 921784

SALES AND TECHNICAL ASSISTANCE SERVICE