

LP542TT

"LP542TT": THERMAL LABELLER



Direct and thermal transfer labeller, connectable to 3590, CPWE and DFW series indicators. The fast label throughput, the high printing resolution and the compact size make it suitable for printing in any industrial environment.

**The best solution
for advanced industrial
applications**

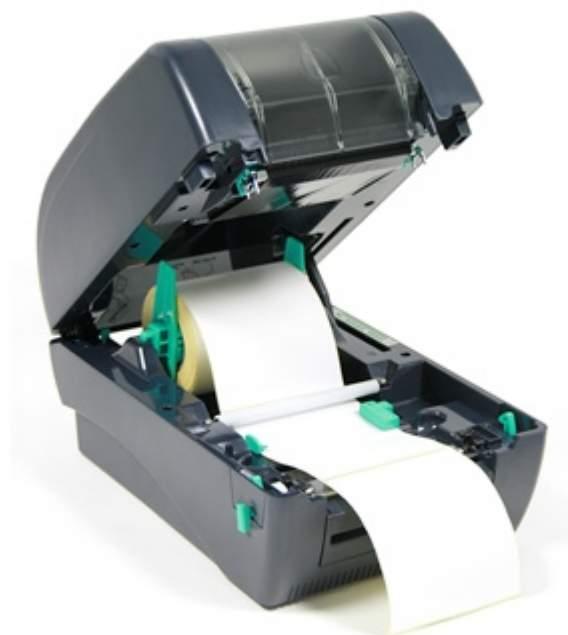
TECHNICAL FEATURES

- PRINTING METHOD: Thermal transfer or Direct thermal.
- STANDARD RIBBON REWINDER
- PRINTING RESOLUTION: 203 dpi (8 dots/mm).
- PRINT SPEED: up to 127 mm/sec.
- MAXIMUM PRINT LENGTH: 1016 mm.
- MAXIMUM PRINT WIDTH: 108 mm.
- LABEL LENGTH: From 10 mm up to 999 mm.
- LABEL WIDTH: From 20 mm up to 112 mm.
- LABEL THICKNESS: From 0.06 mm up to 0.19 mm.
- LABEL ROLL DIMENSIONS: 127 mm OD (5.0" OD).
- FONTS: 8 fixed alphanumeric fonts, 1 true type Font with rotation at 0, 90, 180, and 270 degrees.
- AVAILABLE BAR CODES: Code 39, Code 39C, Code 93, Code 128uCC, Code 128 (Subset A, B, C), Codabar, Interleave 2 of 5, EAN-8, EAN-13, EAN-128, UPC-A, UPC-E, EAN e UPC 2(5) digits add-on, MSI, PLESSEY, POSTNET, China Post, ITF 14, EAN14.
- AVAILABLE 2D BAR CODES: PDF-417, MAXICODE, DATA MATRIX, QR code.
- MEMORY: 2 MB DRAM, 2 MB Flash Memory.
- INTERFACES: RS 232, Parallel, USB 1.1.
- STANDARD SOFTWARE PROGRAMMING, for the creation of customised labels with logos, images, weight data, and bar codes.
- DIMENSIONS in mm(lxwxh): 314 x 213 x 188 mm.
- POWER SUPPLY: Switching 100/240 VAC, 24V 3.75A DC (external power adapter).
- OPERATING TEMPERATURE: From 5 to 40°C.

DETAIL 1



DETAIL 2



Ribbon and roll replacement is quick and simple.

“YOUR WORLDWIDE PARTNER FOR WEIGHING,”

DINI ARGEO
FRANCE sarl
France

DINI ARGEO
GMBH
Germany

DINI ARGEO
UK Ltd
United Kingdom

DINI ARGEO WEIGHING
INSTRUMENTS Ltd
China

DINI ARGEO
OCEANIA
Australia



COMPANY HEADQUARTERS

Via Della Fisica, 20
41042 Spezzano di Fiorano Modena • Italy
Tel. +39.0536 843418

SERVICE ASSISTANCE

Via Dell'Elettronica, 15
41042 Spezzano di Fiorano Modena • Italy
Tel. +39.0536 921784

SALES AND TECHNICAL ASSISTANCE SERVICE