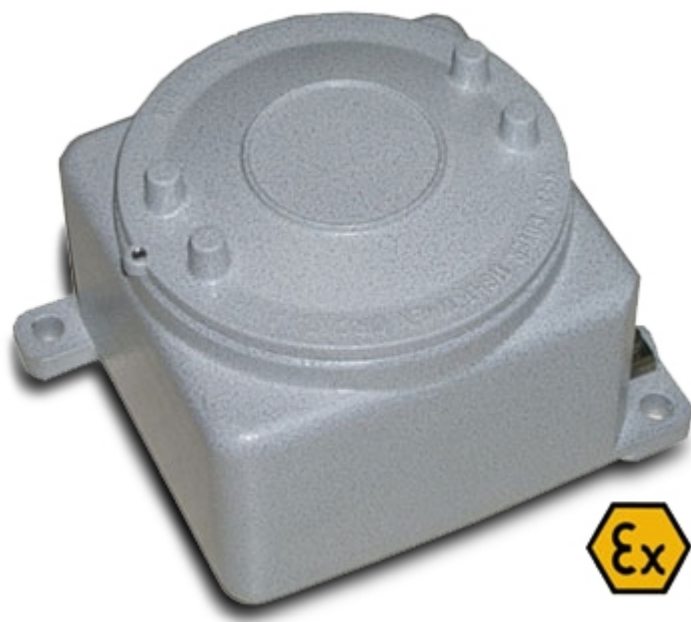


PW200XR

PW200XRD POWER SUPPLIER FOR ATEX 1 AND 21 ZONES



Power adapter and input/output interfacing module, for zones classified as hazardous (zones 1 and 21) with these protection modes: ATEX II 2(2)G Ex d [ib Gb] IIC T4 Gb and ATEX II 2(2)D Ex tb [ib Db] IIIC T140°C Db.

The best solution
for advanced industrial
applications

MAIN FEATURES

- Extremely versatile, and able to transform dangerous voltages coming from safe areas (24Vdc and 24/115/230Vac) into an intrinsic safety voltage, for powering devices in hazardous areas.
- Through the PW200IO option (4 intrinsically safe inputs and 4 intrinsically safe or 4 unprotected data outputs), the PW200XRD module allows to receive the signals from outside and to manage intrinsically safe devices or devices with greater absorption, such as relays, placed in the Exd box (for use with DFWATEXIO).
- Designed and made according to the ATEX directive, following the EN60079-0/60079-11/60079-31 norms.

GENERAL TECHNICAL FEATURES

- Exd case in aluminum alloy, with II 2(2)G Ex d [ib Gb] IIC T4 Gb and II 2(2)D Ex tb [ib Db] IIIC T140°C Db protection mode.
- The power supply voltages of the PW200XR models are:
 - 230 Vac (mod. PW200XRD - 230)
 - 115 Vac (mod. PW200XRD - 115)
 - 24 Vac (mod. PW200XRD - 24A)
 - 24 Vdc (mod. PW200XRD - 24D)
- Features of the intrinsically safe power supply output:
 - Vmax: 10,5 Vdc
 - Imax: 140 mA
 - Uo: 12,6 Vdc
 - Io: 340 mA
 - Lo: 700 μ H
 - Co: 6,8 μ F
- Equipped with a connection cable between PW200XRDxxx and DFWATEX2GDxxx, 3m long.

PW200IO OPTION FEATURES

- 4 data inputs (Exi inputs), with the following features (for interfacing with DFWATEXIO indicator):
 - Ui: 40 Vdc
 - Ii: 30 mA
 - Li: 0 μ H
 - Ci: 0 μ F
- 4 intrinsically safe or unprotected data outputs (Exi inputs), with the following features (commanded by the DFWATEXIO indicator):

INTRINSIC SAFETY:

- Ui: 40 Vdc
- Ii: 30 mA
- Li: 0 μ H
- Ci: 0 μ F

Note: If these inputs and outputs are powered through an intrinsic safety voltage inside the PW200XRD, the overall max. absorbable current from the 4 outputs and 4 inputs is 40mA; so, if just 1 output is used, it can supply up to 20mA

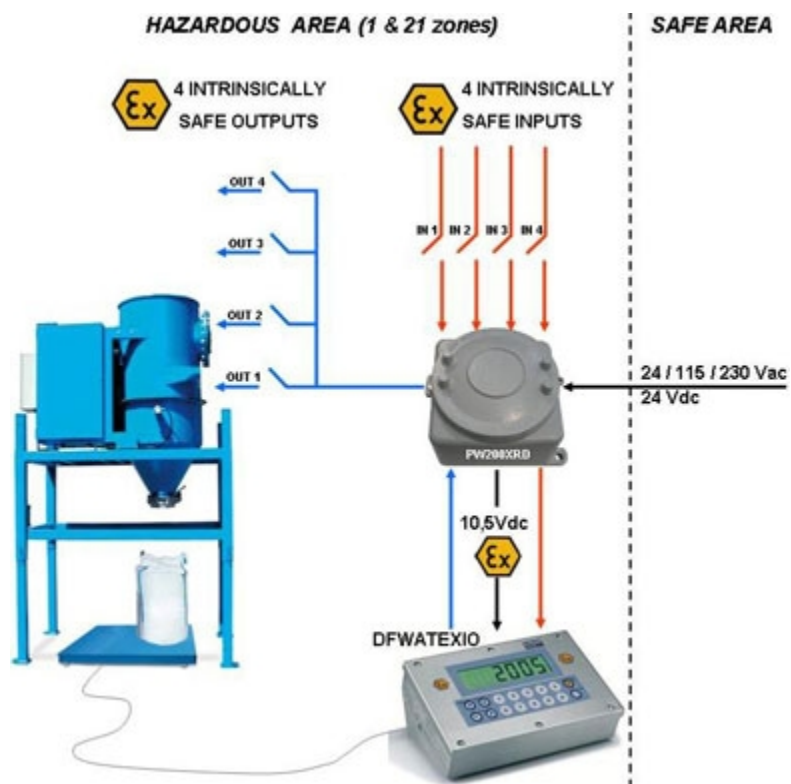
UNPROTECTED:

- Umax: 48 Vac o 60Vdc
- Imax: 150 mA

OPTIONS ONLY AVAILABLE AT TIME OF ORDER

- Input/output option

DETAIL 1





DINI ARGEO
FRANCE sarl
France

DINI ARGEO
GMBH
Germany

DINI ARGEO
UK Ltd
United Kingdom

DINI ARGEO WEIGHING
INSTRUMENTS Ltd
China

DINI ARGEO
OCEANIA
Australia



COMPANY HEADQUARTERS

Via Della Fisica, 20
41042 Spezzano di Fiorano Modena • Italy
Tel. +39.0536 843418

SERVICE ASSISTANCE

Via Dell'Elettronica, 15
41042 Spezzano di Fiorano Modena • Italy
Tel. +39.0536 921784

SALES AND TECHNICAL ASSISTANCE SERVICE